



Invitation to the annual Dutch Impact Party at MaMA Festival 2018.

Wednesday October 17th, Le Bar à Bulles – 16:30 – 19:00. Free drinks, snacks and excellent networking for delegates!

MICHELLE DAVID & THE GOSPEL SESSIONS
PITOU
ALTIN GÜN

> 16.30hrs
> 17.20hrs
> 18.10hrs

Sponsored

NBHAP



Premiere: Linnéa And Sweep Spin Beatrice Eli's 'That's Not Us'



Photo: Beatrice Eli by Elle Johnson, sweep by Moly Disa Bergström and Linnéa by Hilda Bordahl

Rising Swedish producers from Cherish Label take on 'That's Not Us' with two diverse remixes

17/04/2018

by [Austin Maloney](#)

Beatrice Eli's 2017 ***The Careful*** EP was a pretty emotionally open record, but *That's Not Us* was its beating heart, a song poised somewhere between ballad and dark electronica that pulled a relationship wide open and wondered what to do with it. The EP's opening single, the more upbeat, slick dance-pop of *Careful* made the big initial impression, but *That's Not Us* is the one that sticks with you, a stunningly powerful piece of digitalised soul.

Just under a year on from *That's Not Us'* release, the track is getting some fresh attention from two of Stockholm label Cherish's (a label that aims to boost the music of female and non-binary identifying artists and producers) rising stars. As part of a collaboration between Cherish and Stockholm culture group **Trans94**, it's now been remixed by **sweeep** (whose debut EP ***Dissapear Here*** came out last week) and **Linnéa** (who released a single, ***So Real***, in February). And we're delighted to bring you the premiere.

On the two remixes, the duo take the track to opposite ends of the stylistic spectrum. **Linnéa** pulls it deep into her world, ramping up the syrupy sweetness of the production, upping the tempo and hopping in on the vocals to turn the song into smooth, dreamy pop. **Sweeep**, on the other hand, brings it somewhere else entirely, pulling the basics of the song apart and transforming them. The original track is in there, but in the same sense that there's a recognisable picture of a person in a Picasso painting: it's chopped up and rebuilt into something entirely different, born again as spectral, glitching witch-house.

On the song, Eli says:

'I admire both Dream Linnéa and sweeep's production styles, they are two unique producers with strong sounds and I love what they did with That's Not Us. I'm also very inspired by Cherish Label. Evelina [Åslin, label manager] is a force, I feel she's changing the scene here in Stockholm by providing a platform with soft values in an industry that can be very hard and macho.'

sweeep says of her remix:

'It was fun remixing her song, since I don't produce pop I could flip it to how it would sound if it was a sweep-song. I pitched and chopped the a capella, and created a dark atmosphere around a melody I liked in Bea's song.'

Linnéa says:

'Obviously I had to take the opportunity to do a duet with Swedish Queen B, otherwise I would have to demand my own resignation. I guess my version is the same 808 vs mallet syncopation shit I always do, except I added some cute tablas and a berimbau. It turned out pretty neat.'

Check both remixes out below. They're released on **Cherish Label** and Trans94 on April 18.



[Cherish Label](#)

Beatrice Eli - That's Not Us (Cherish Label Remixes)

2

TRACKS

RECENT



Fanny Andersen Sells Her Soul In New Video For 'Dollar Signs'

Norwegian popstar takes part in a dark wedding in the clip for her spectacular new single.

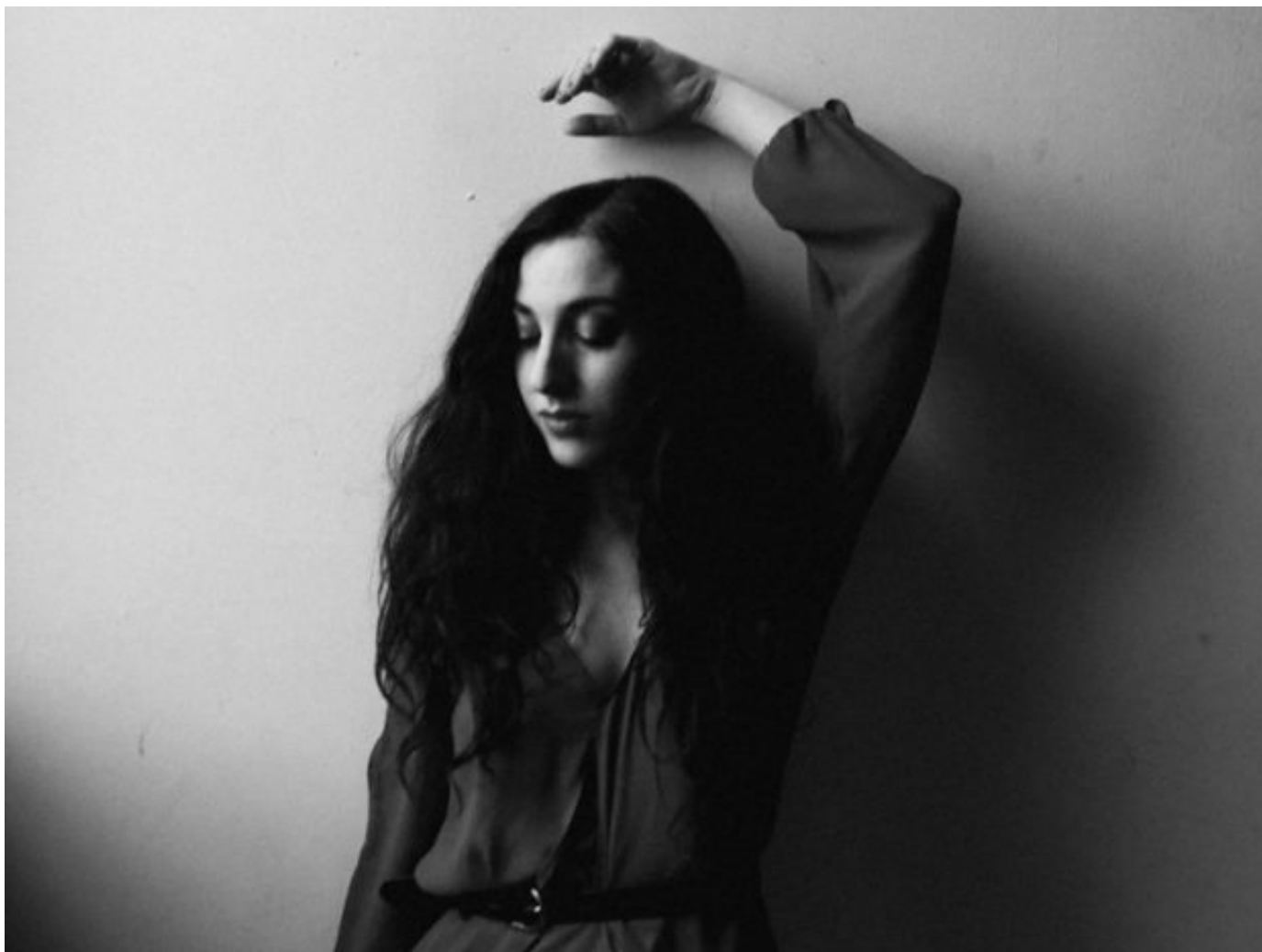
[continue reading >](#)



5 New Releases 05/10/18: Phosphorescent, Molly Burch, Saint Sister, Tokyo Police Club, Adrienne Lenker

Friday is release day. But what to listen to from the sheer endless sea of new records? Don't worry, NBHAP's editors can help you with that. These are our Top 5 recommendations.

[continue reading >](#)



Welcome The Autumn Season With Our Rearranged Melancholic Playlist On Spotify

Songs to comfort you in these cold times, provided by Marissa Nadler, William Fitzsimmons, S. Carey, Mazzy Star, Fenne Lily, Ólafur Arnalds, Angel Olsen, Ben Howard, Mogwai and many more.

[continue reading >](#)

SUPERUNKNOWN

[About](#)
[Mediakit](#)
[Legal Notice](#)

© 2018 | NBHAP | All rights reserved

